

2021 年 5 月 4 日

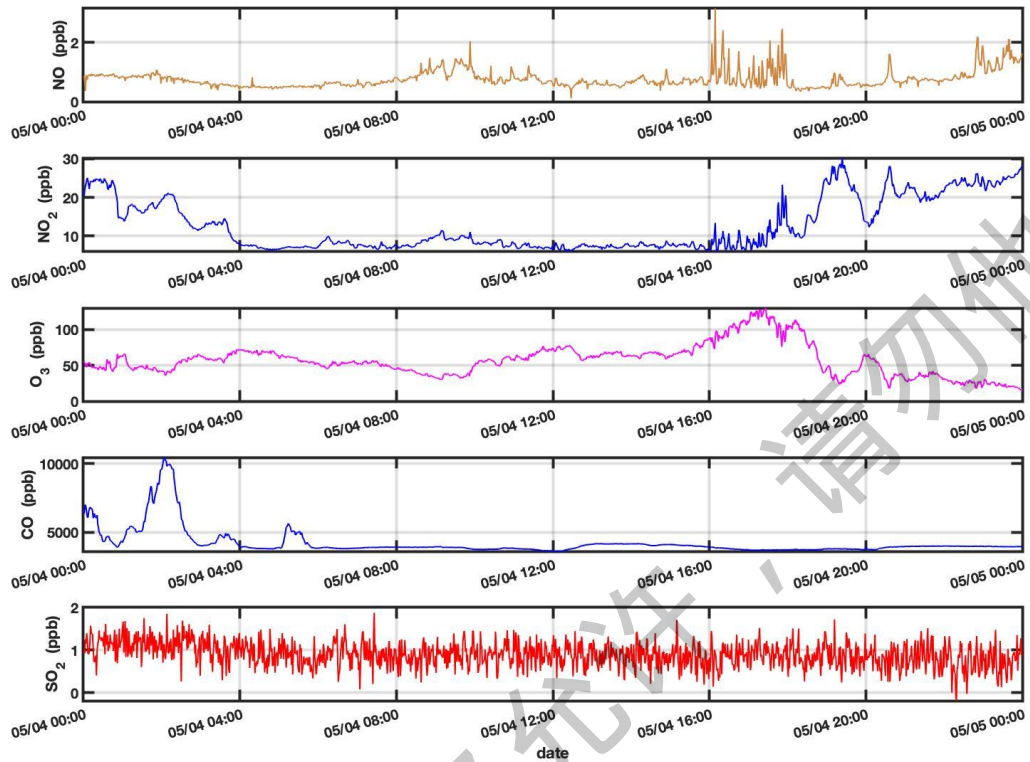
NUIST 站点

大气-气溶胶-边界层-云综合观测实验日报

注：以下观测结果均为观测数据初步处理结果，仅做参考，不能代表最终观测结果。对观测感兴趣者，可联系：王玉莹

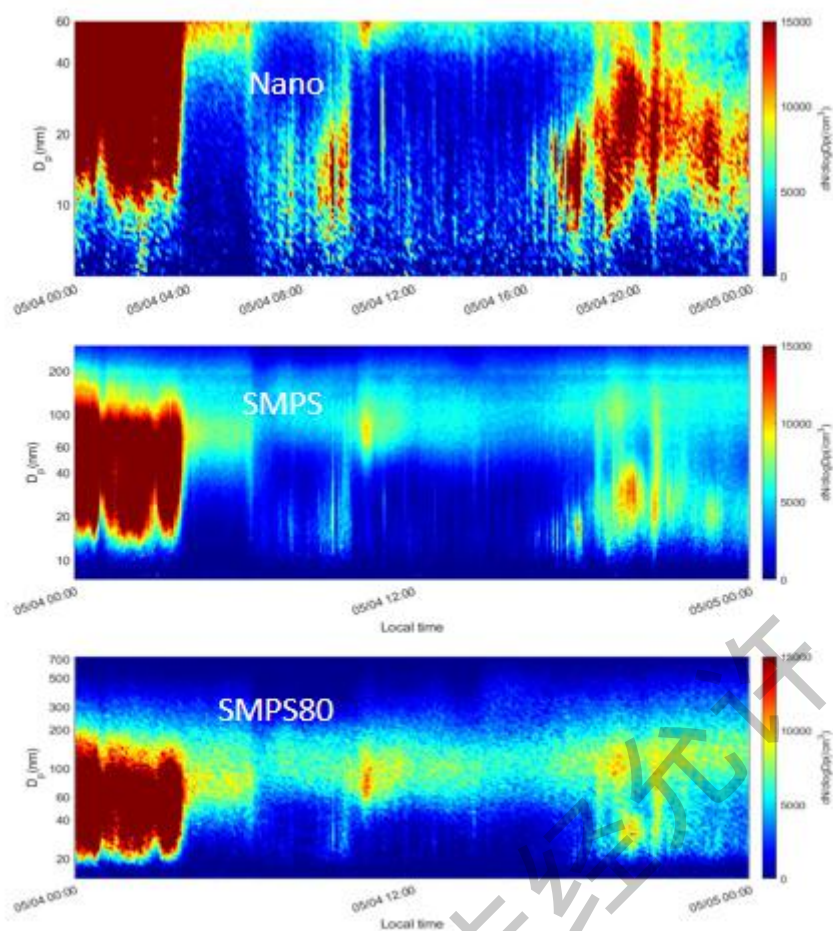
(yuyingwang@nuist.edu.cn)

1. 污染气体测量结果



作图：杨子谦

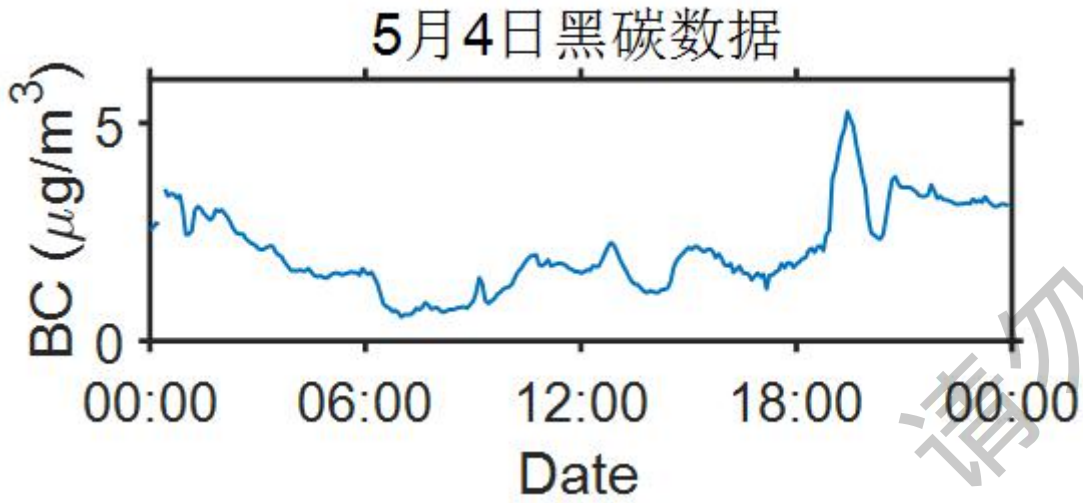
2. 气溶胶数浓度粒子谱分布测量结果



作图：王玉祥

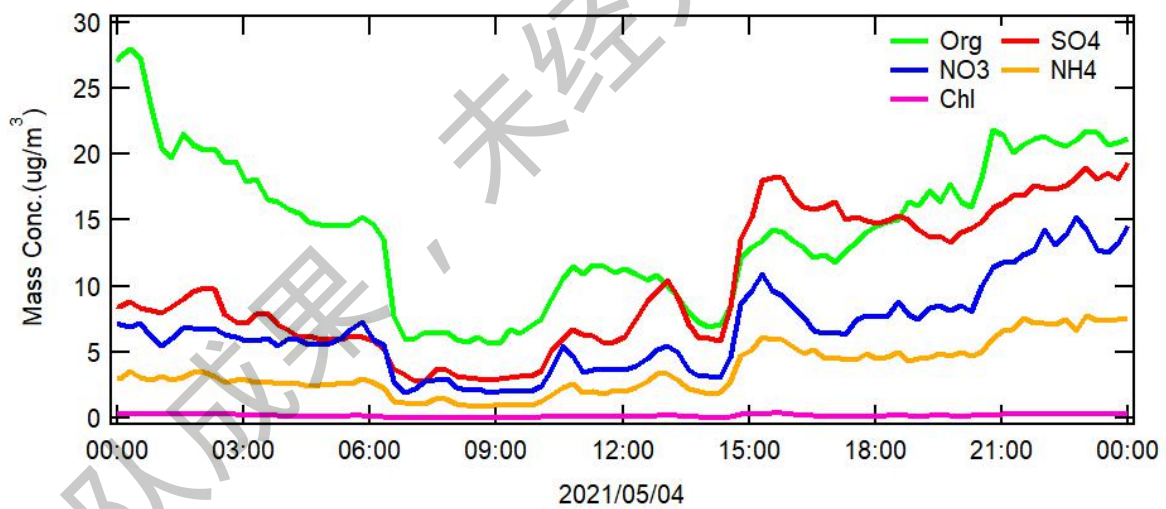
3. 气溶胶化学组分测量结果

AE-33:



作图：许嘉璐

ACSM:

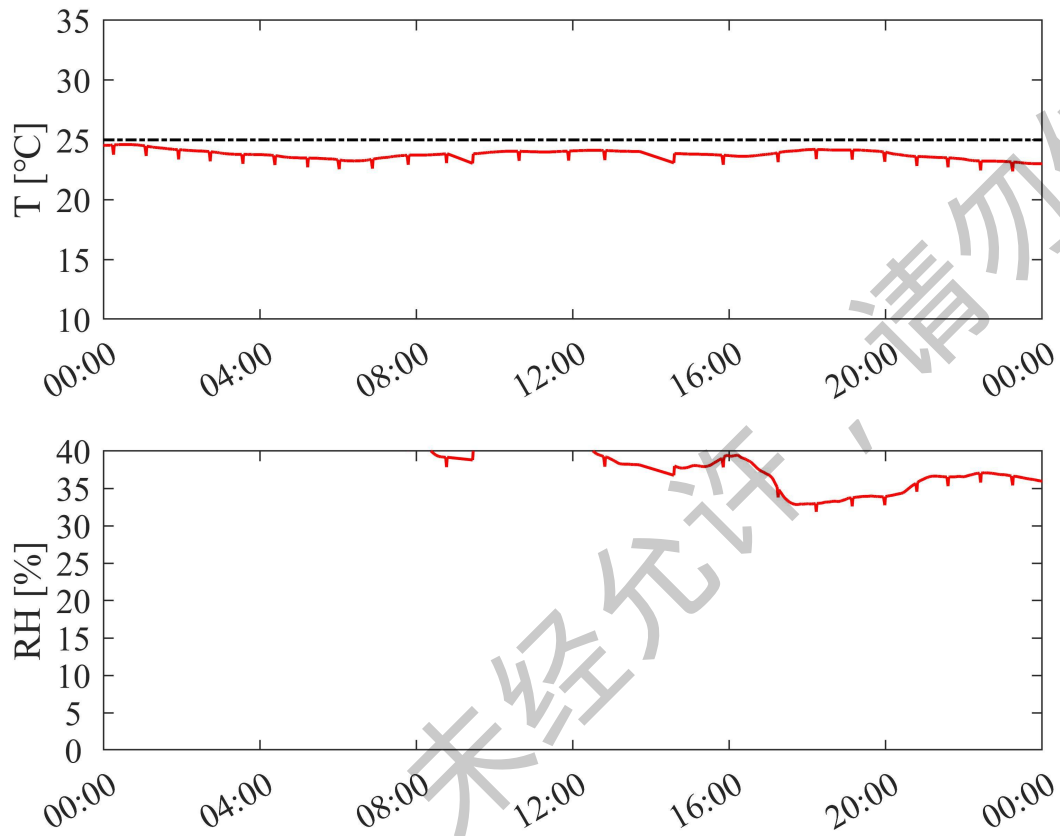


作图：曾思琪

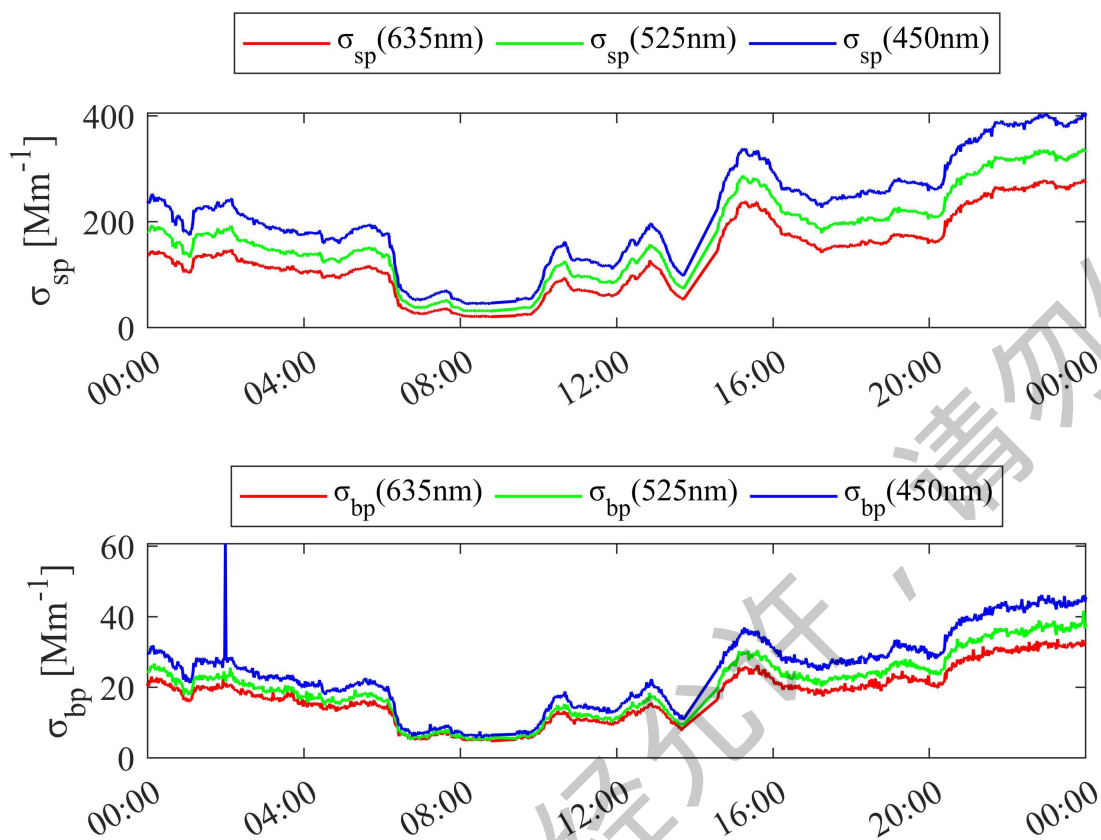
4. 双浊度仪

样气湿度过高，正在调整中

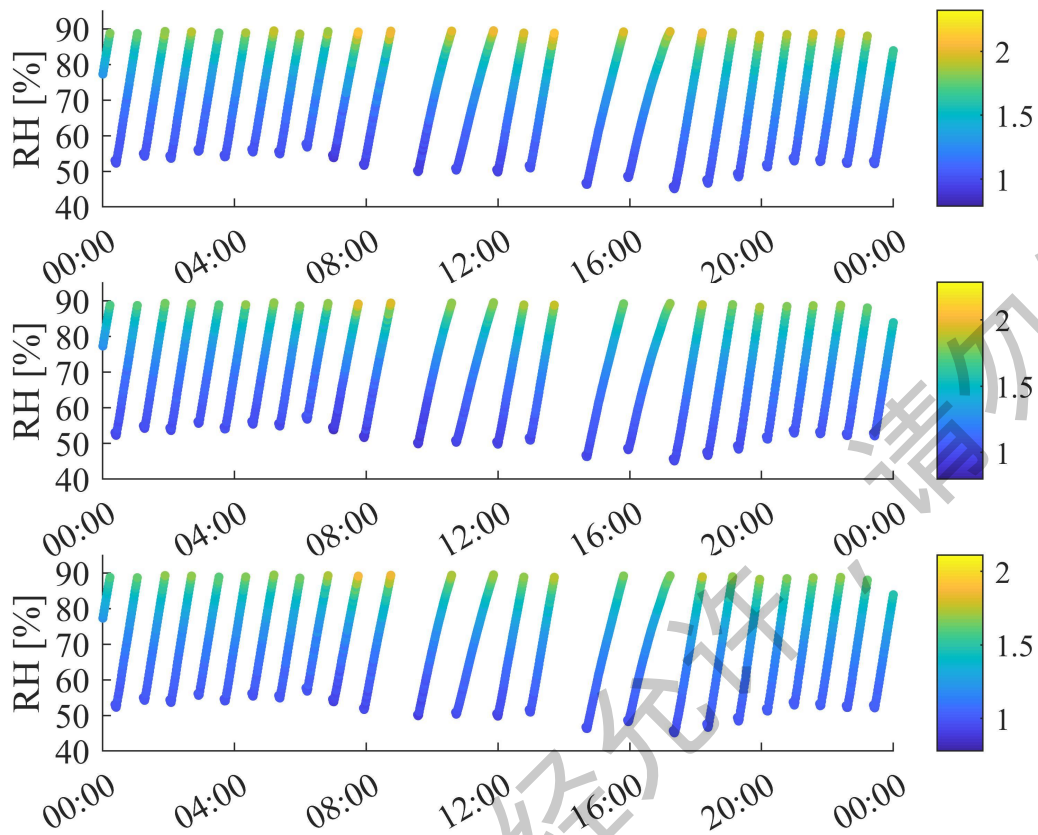
4.1 样气温湿控制



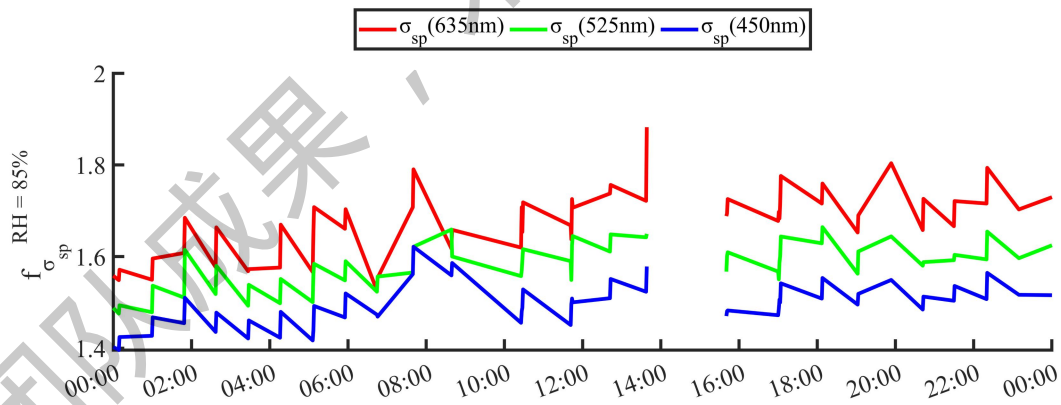
4.2 散射系数及后向散射系数



4.3 气溶胶散射系数吸湿性增强因子



4.4 气溶胶散射系数吸湿性增强因子 (RH=85%)

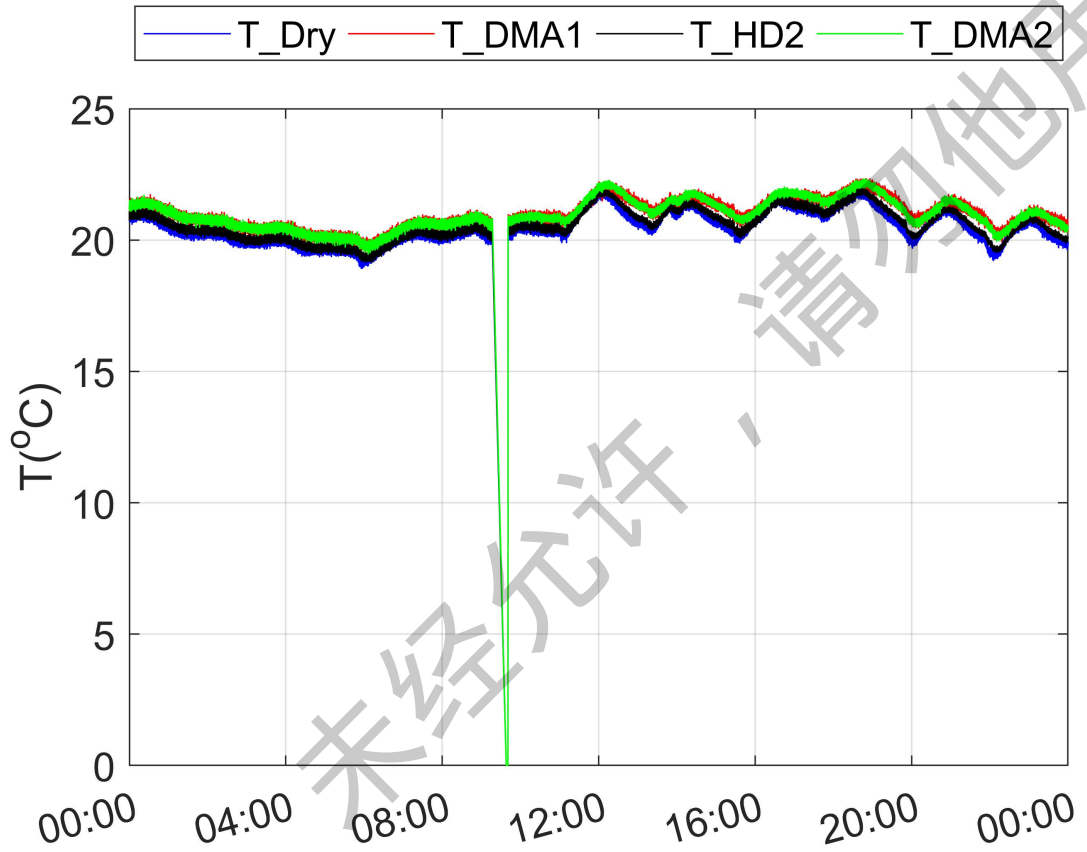


作图：胡嵘

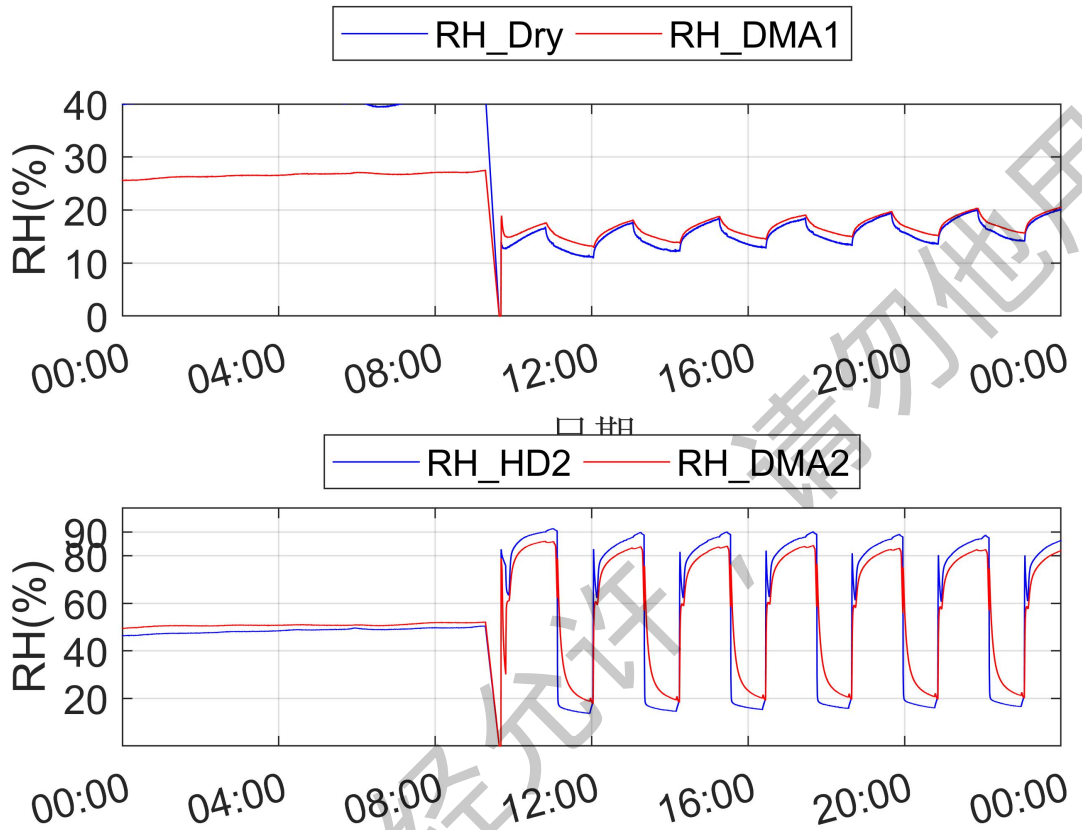
5. 气溶胶加湿迁移差分分析仪

经过调试，于早上 9 点恢复正常

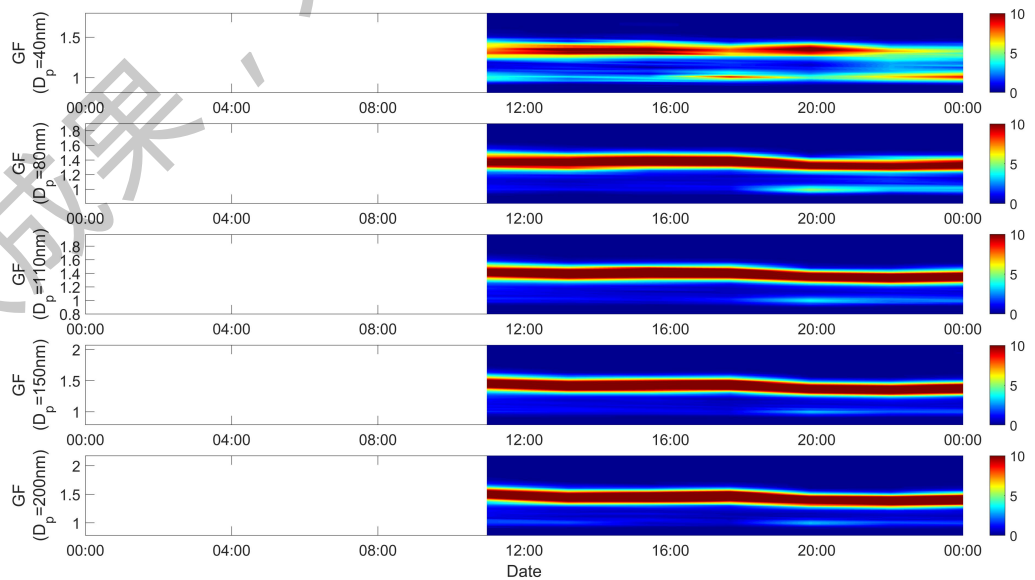
(1) 仪器温度控制



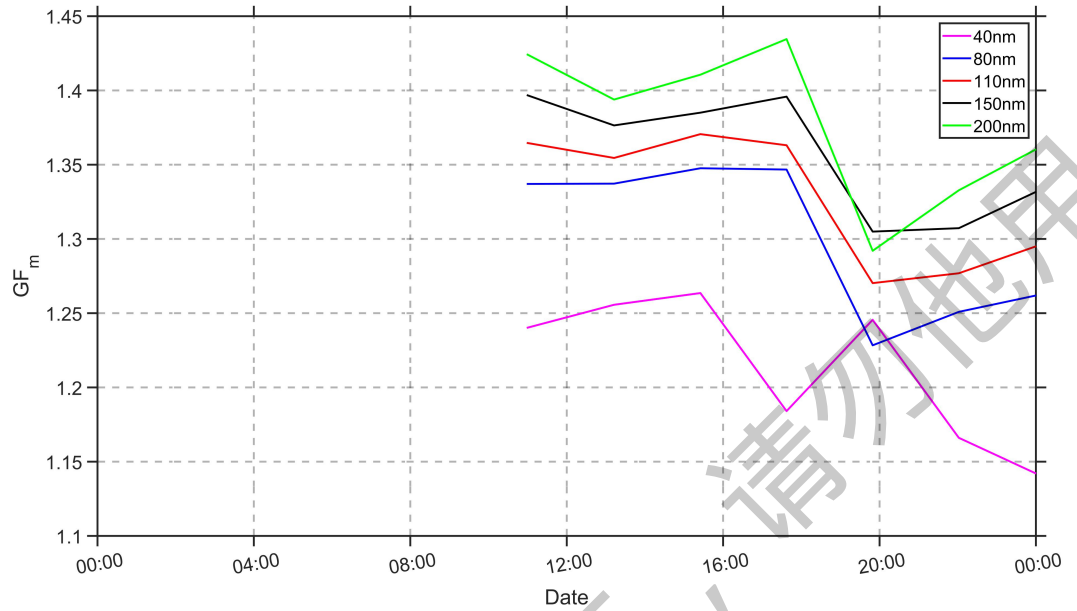
(2) 仪器湿度控制



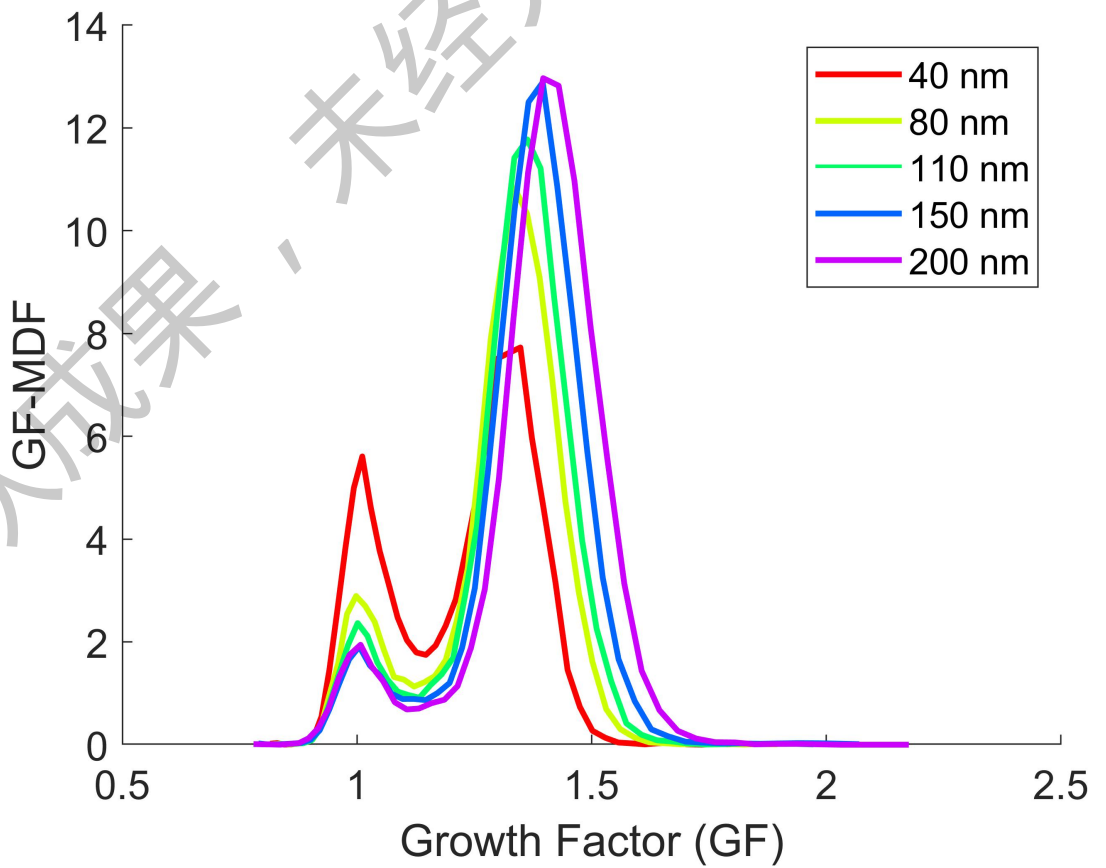
(3) 吸湿性生长因子测量谱分布



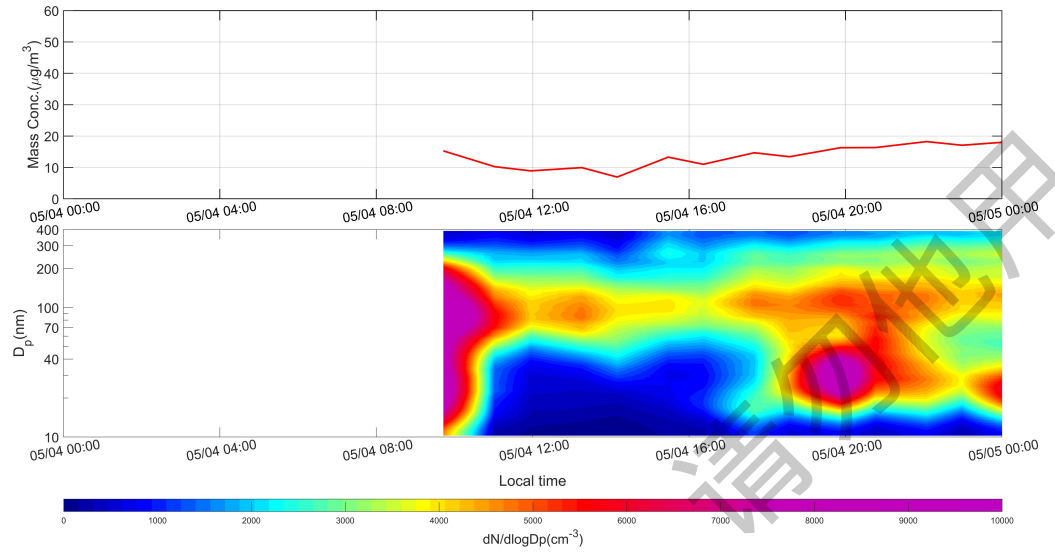
(4) 谱平均吸湿性生长因子



(5) 时间平均吸湿性生长因子



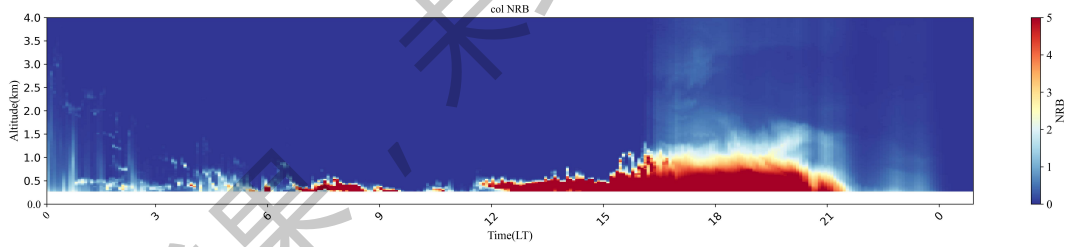
(6) 气溶胶数浓度粒子谱分布



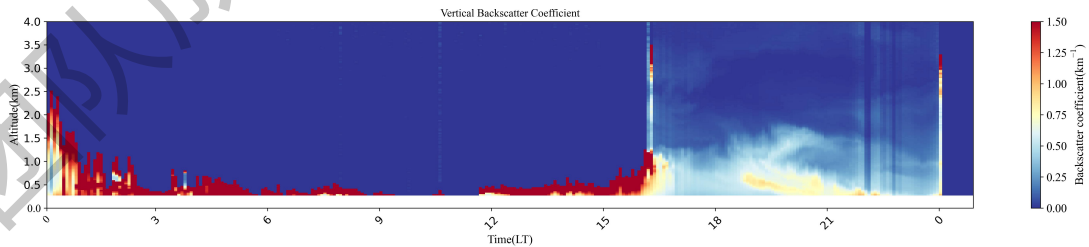
作图：胡嵘

6. 微脉冲激光雷达 (MPL)

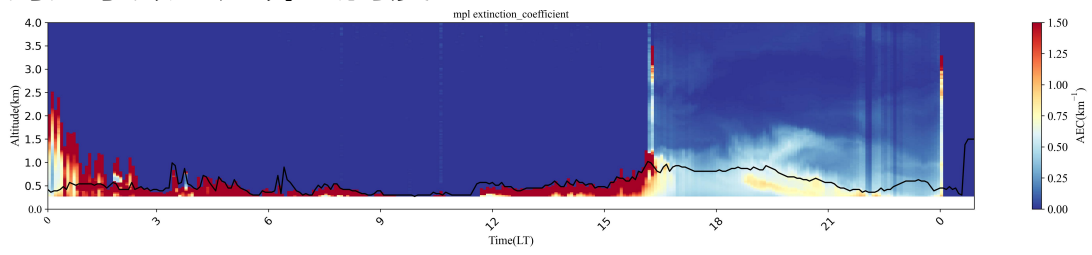
(1) NRB



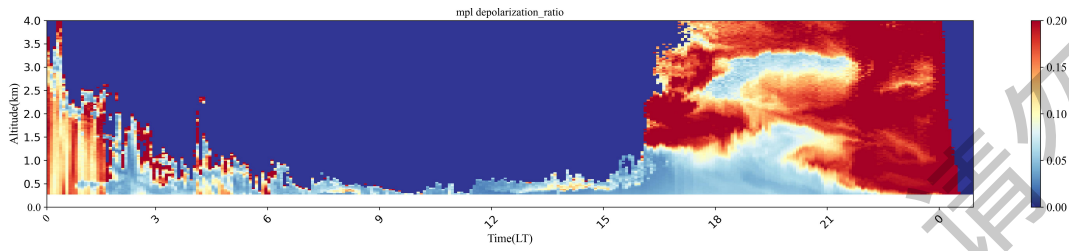
(2) 后向散射系数



(3) 消光系数与边界层高度

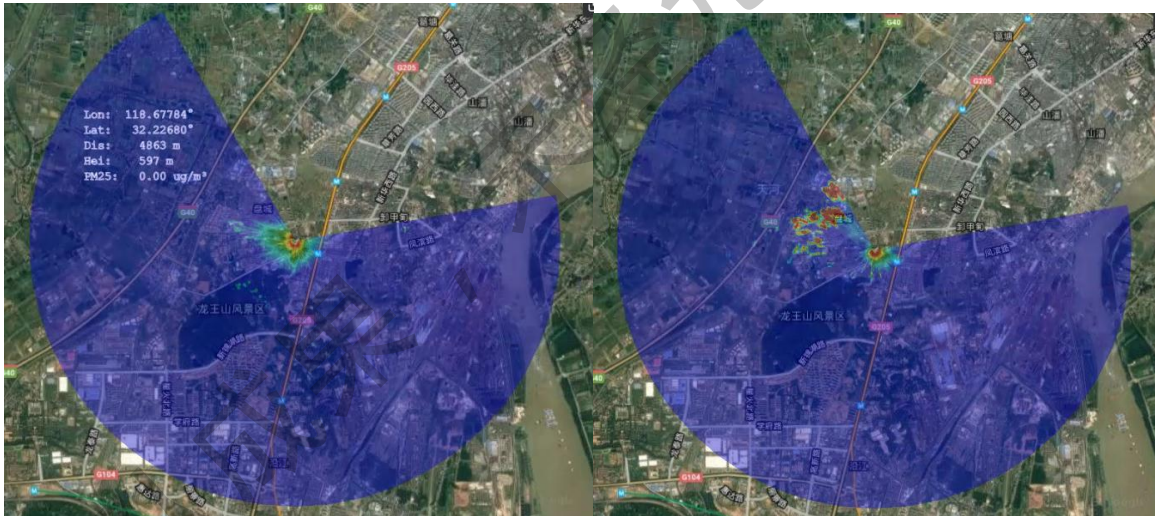


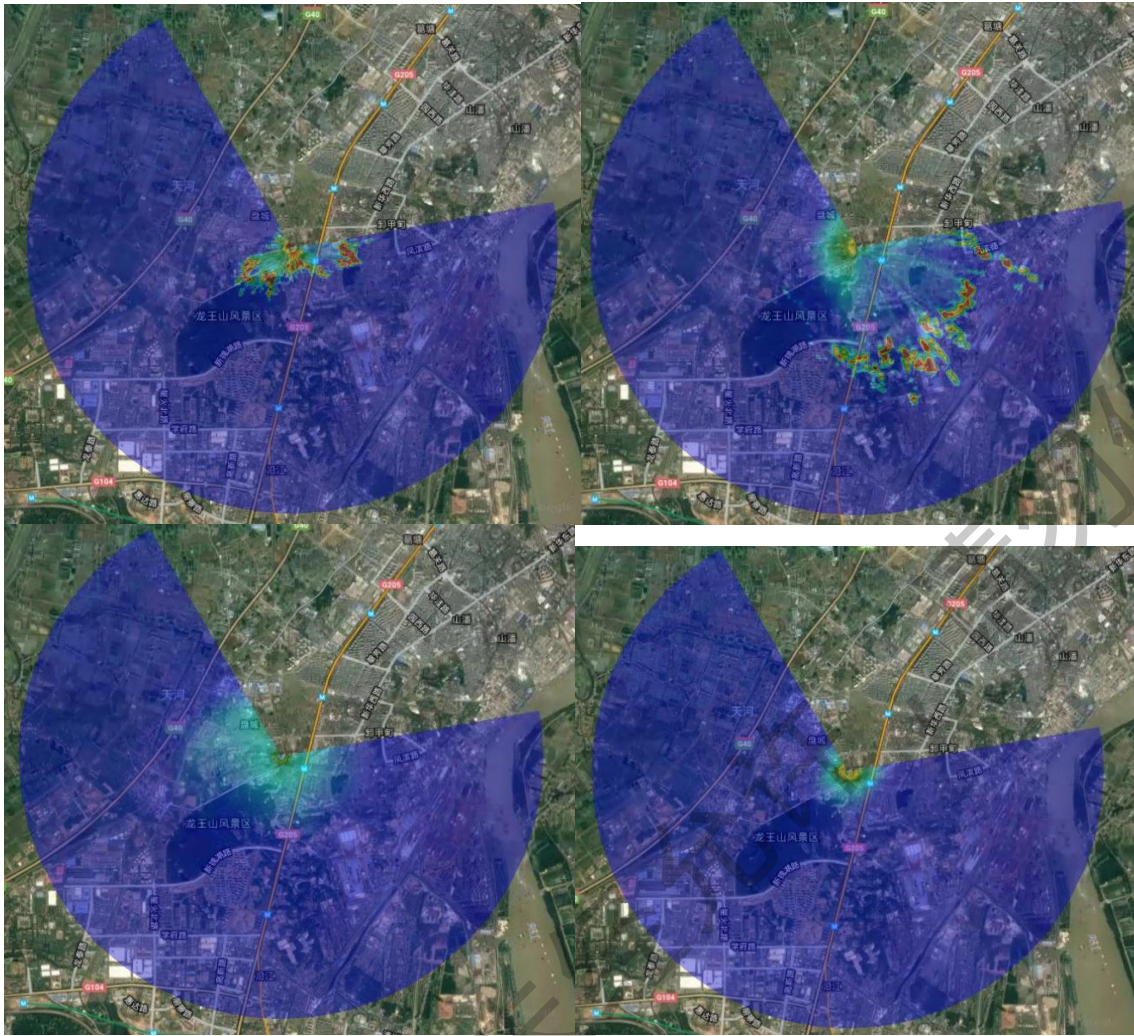
(4) 退偏振比



作图：张寒

7. 3D 雷达

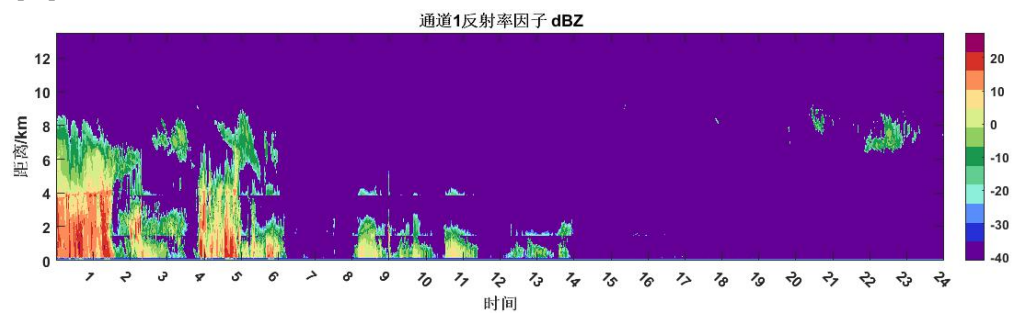




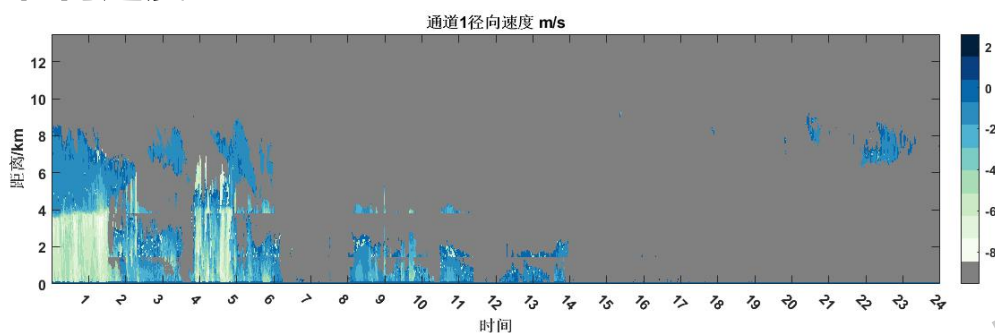
作图：张寒

8. 云雷达：

(1) 反射率因子



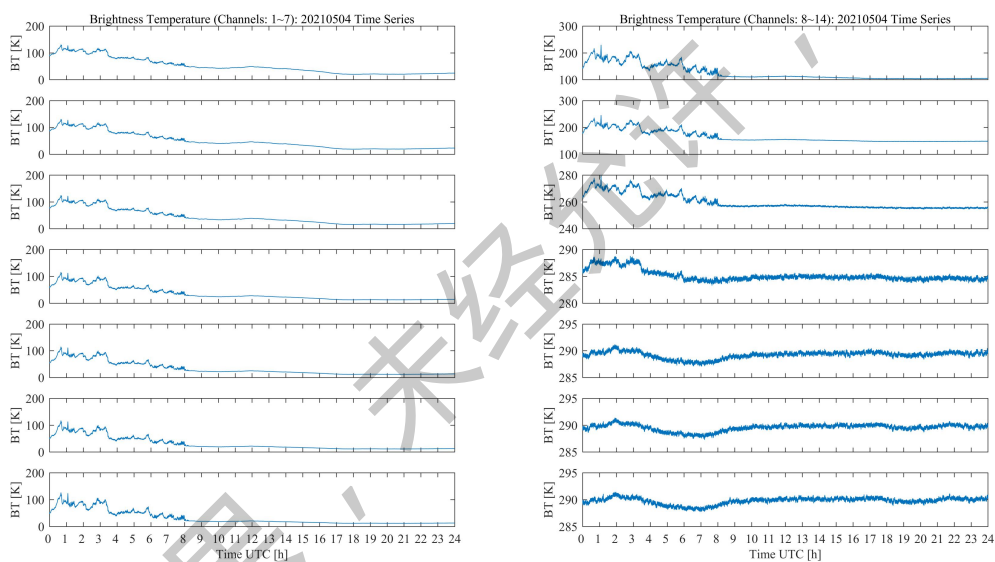
(2) 径向速度



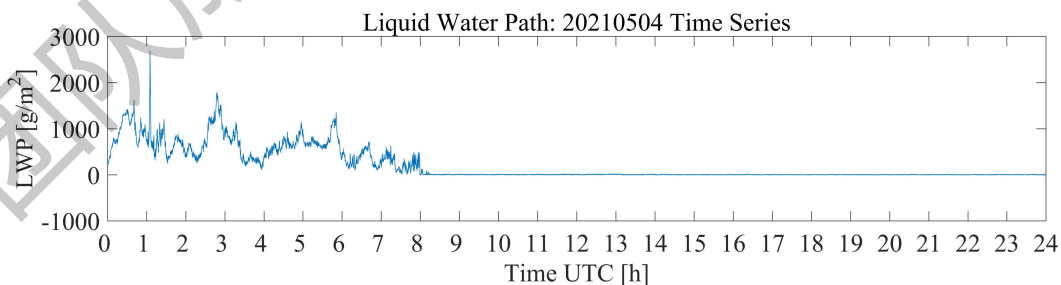
作图: 吴懿璇

9. 微波辐射计

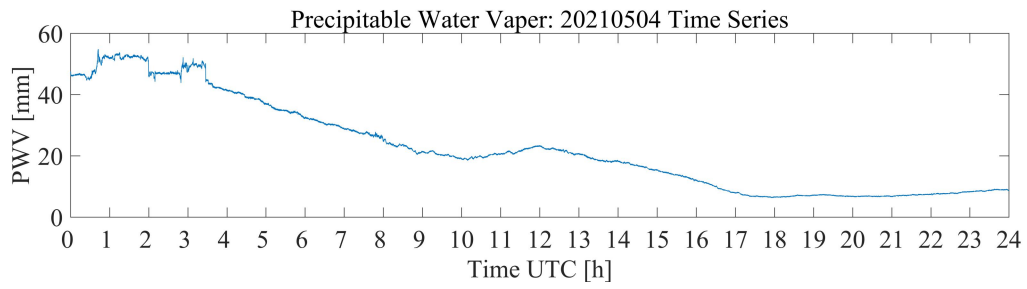
(1) 亮温 (14 通道) 时序:



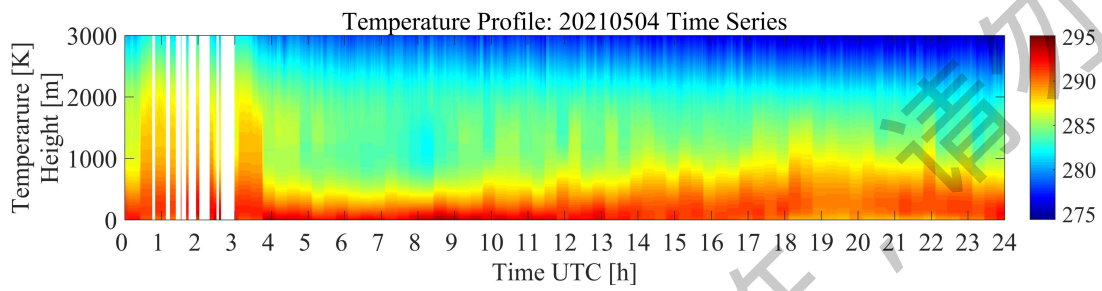
(2) 液水路径时序:



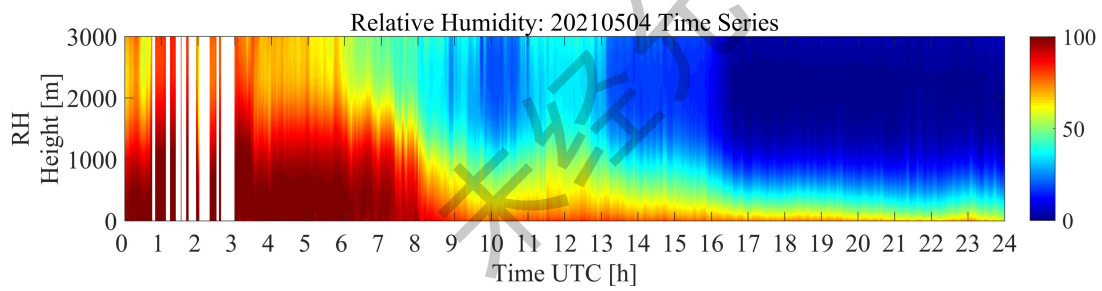
(3) 可降水量时序:



(4) 边界层温度廓线时序:



(5) 边界层相对湿度廓线时序:



作图: 赏益