

2021 年 5 月 14 日

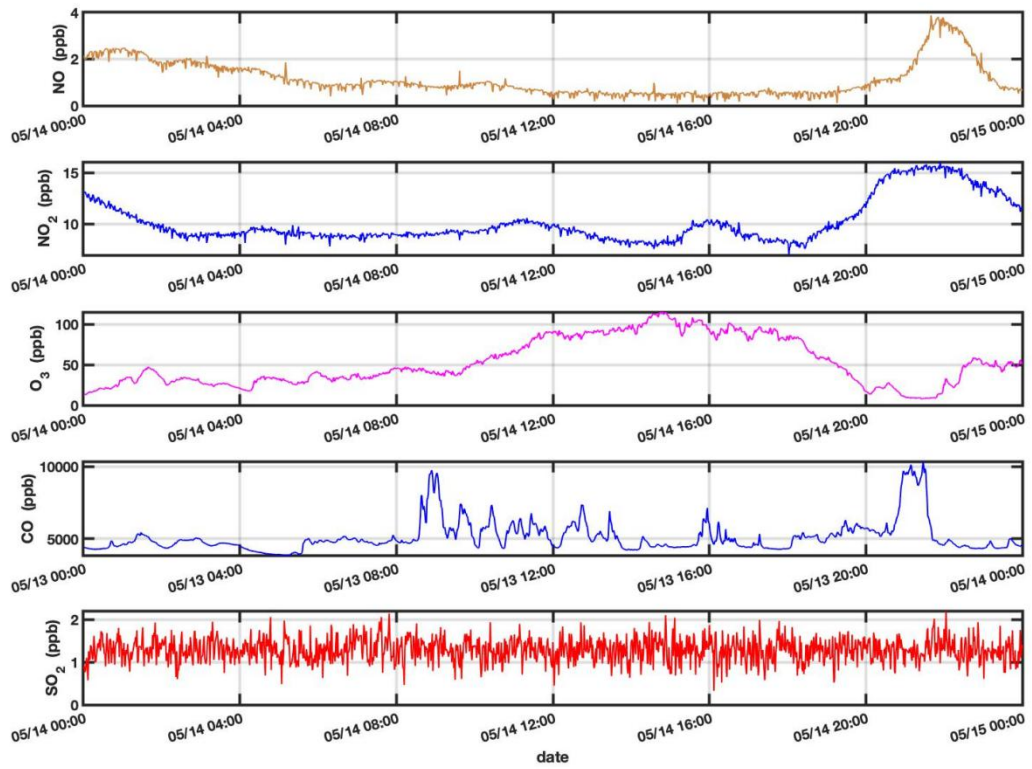
NUIST 站点

## 大气-气溶胶-边界层-云综合观测实验日报

注：以下观测结果均为观测数据初步处理结果，仅做参考，不能代表最终观测结果。对观测感兴趣者，可联系：王玉莹

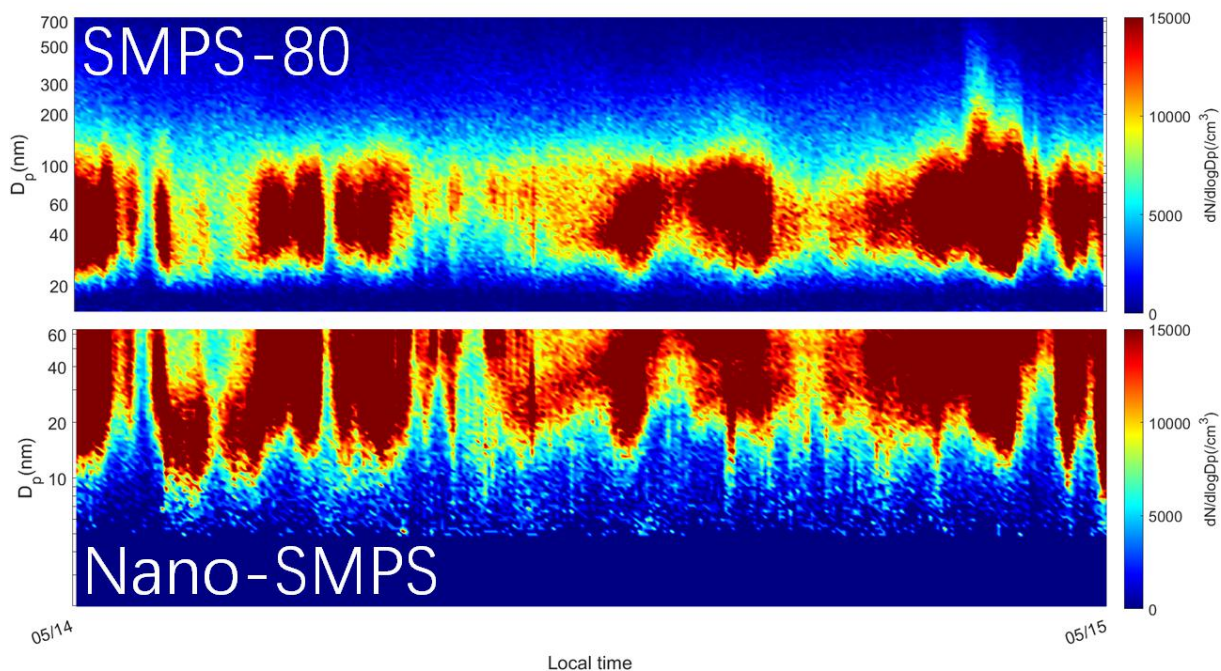
([yuyingwang@nuist.edu.cn](mailto:yuyingwang@nuist.edu.cn))

# 1. 污染气体测量结果



作图：杨子谦

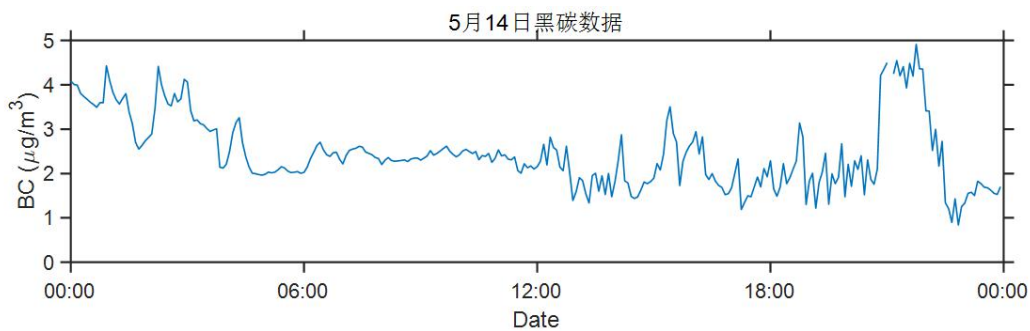
## 2. 气溶胶数浓度粒子谱分布测量结果



作图：陈曦

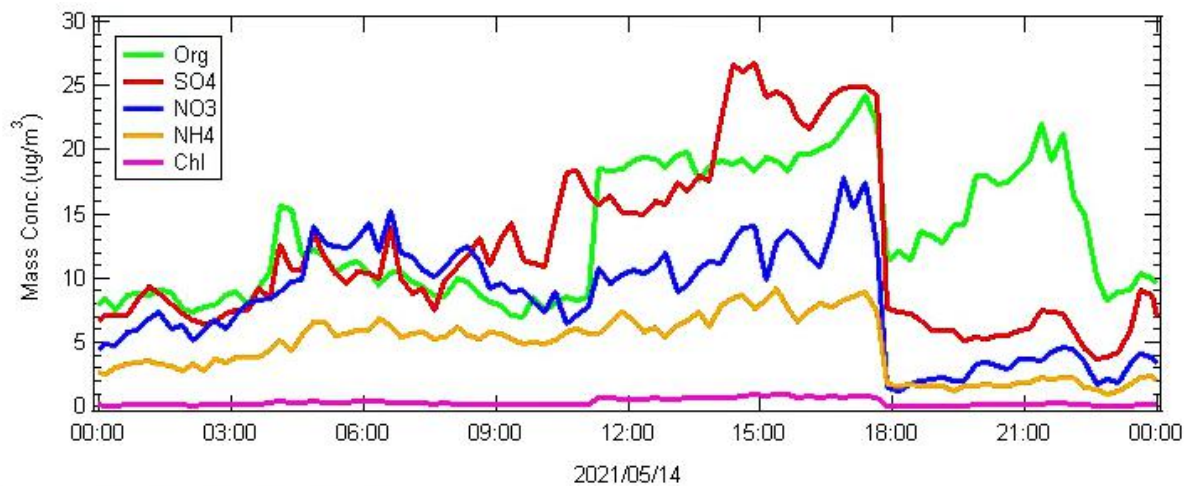
## 3. 气溶胶化学组分测量结果

AE-33:



作图：许嘉璐

ACSM:



作图：曾思琪

#### 4. 双浊度仪

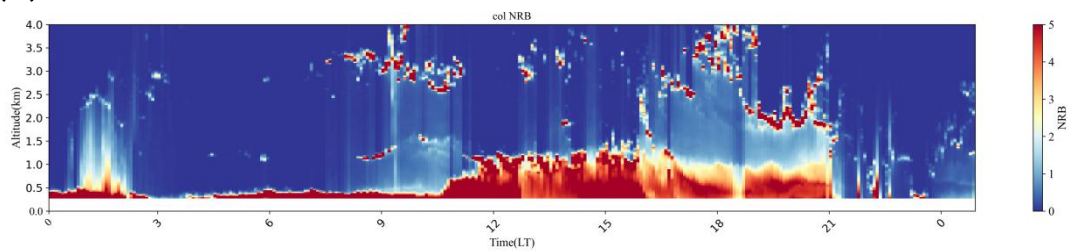
温湿传感器返厂标定，暂停运行

#### 5. 气溶胶加湿迁移差分分析仪

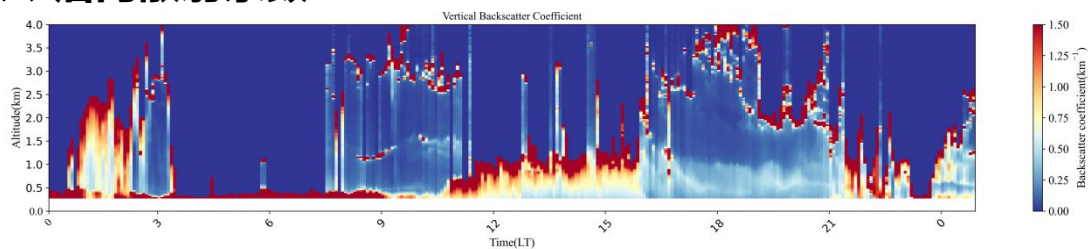
室温较高，暂停运行

#### 6. 微脉冲激光雷达 (MPL)

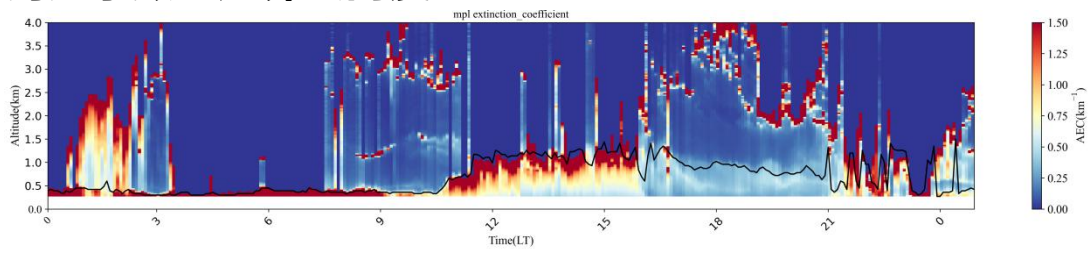
##### (1) NRB



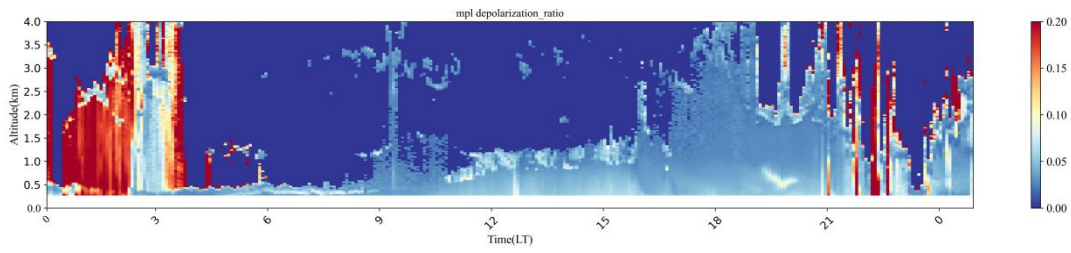
##### (2) 后向散射系数



### (3) 消光系数与边界层高度

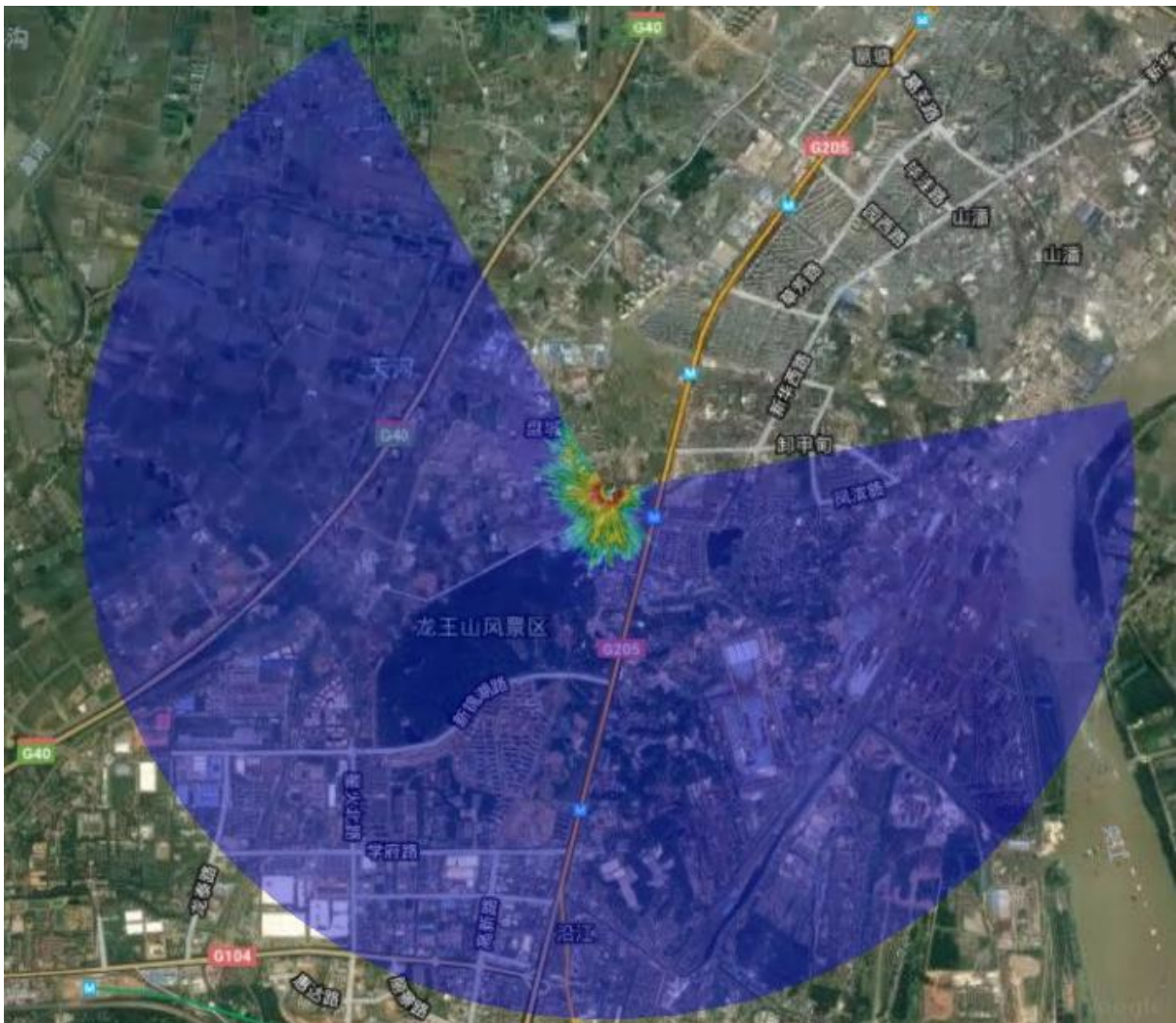


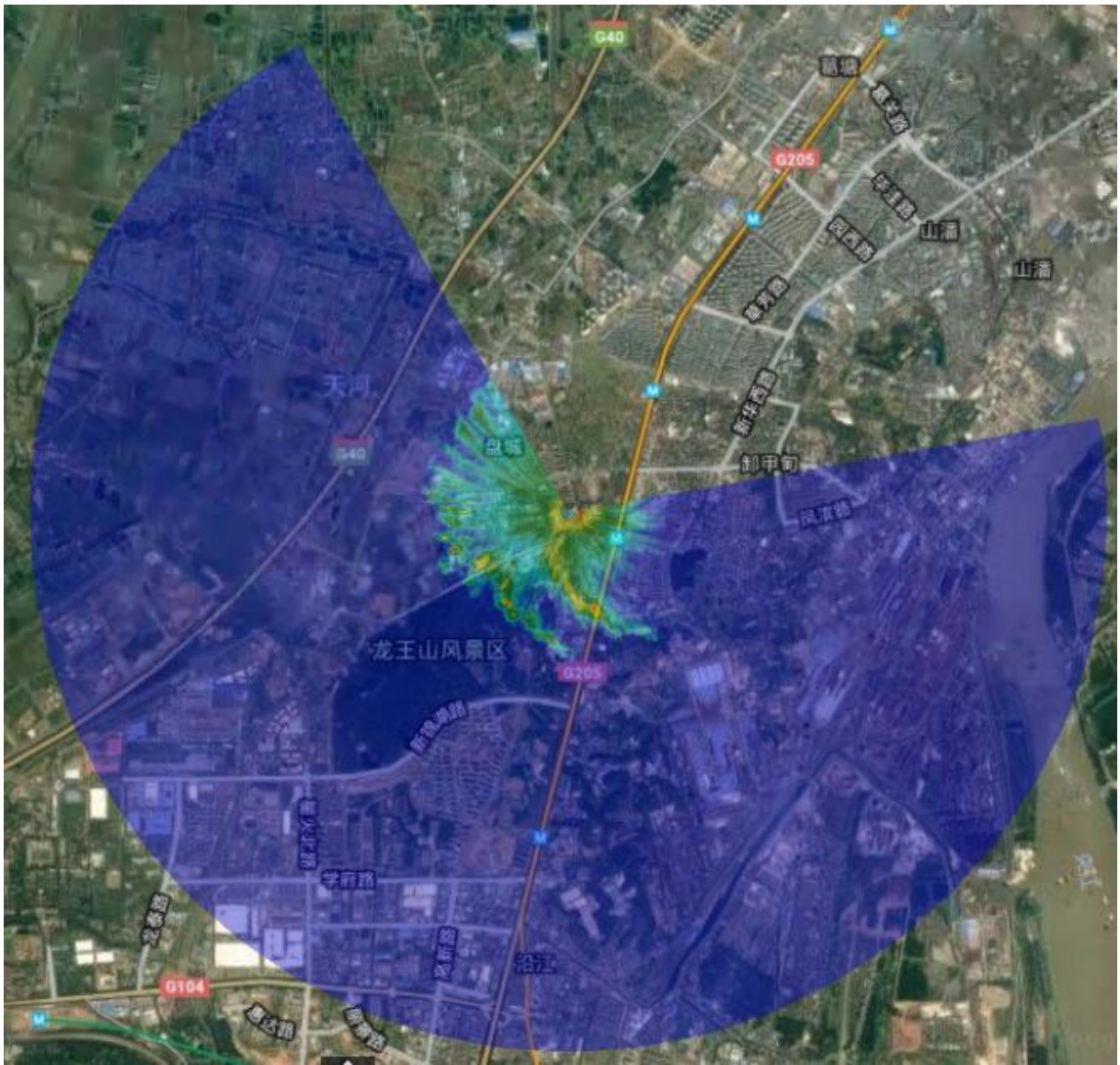
### (4) 退偏振比

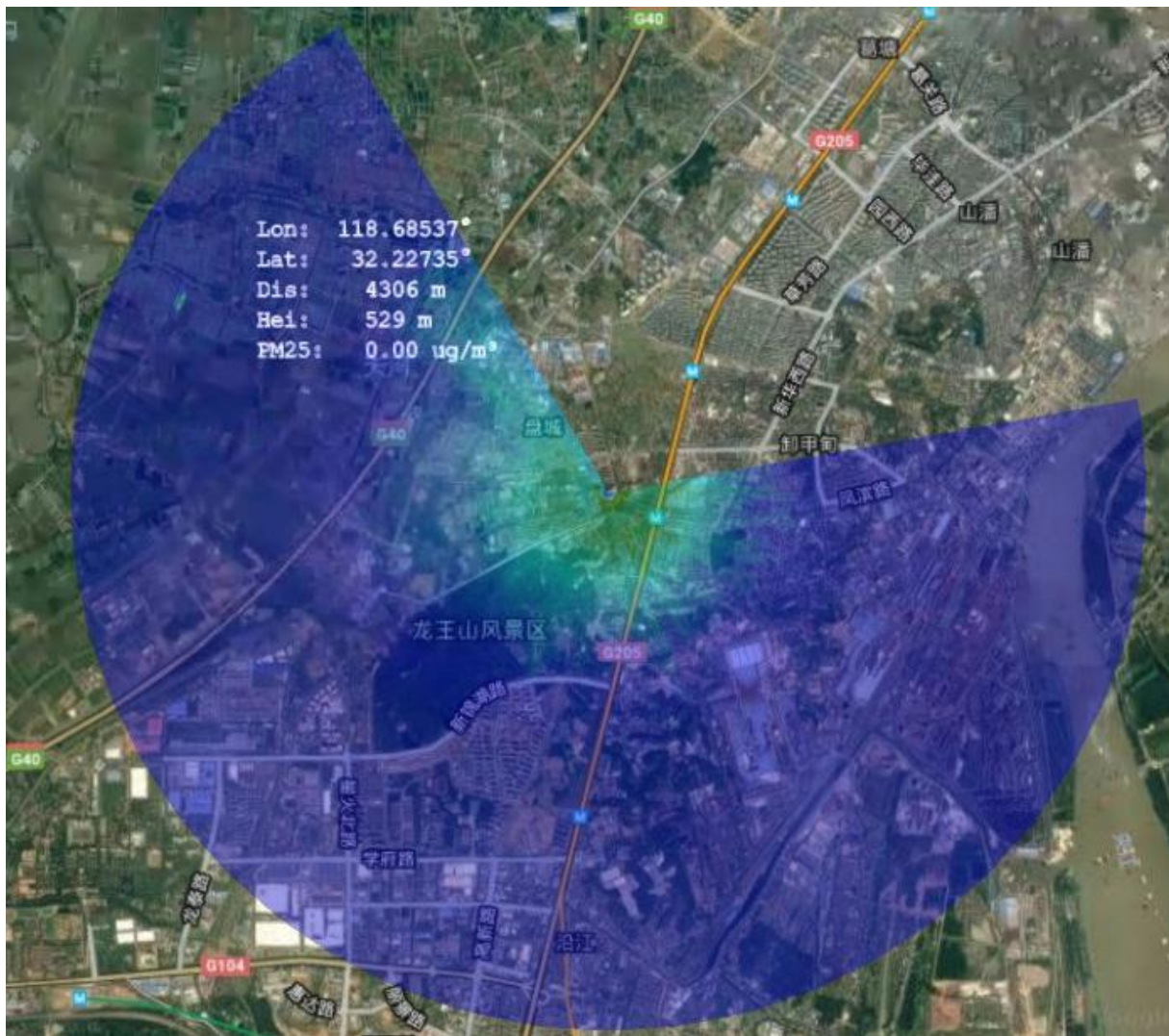


作图：张寒

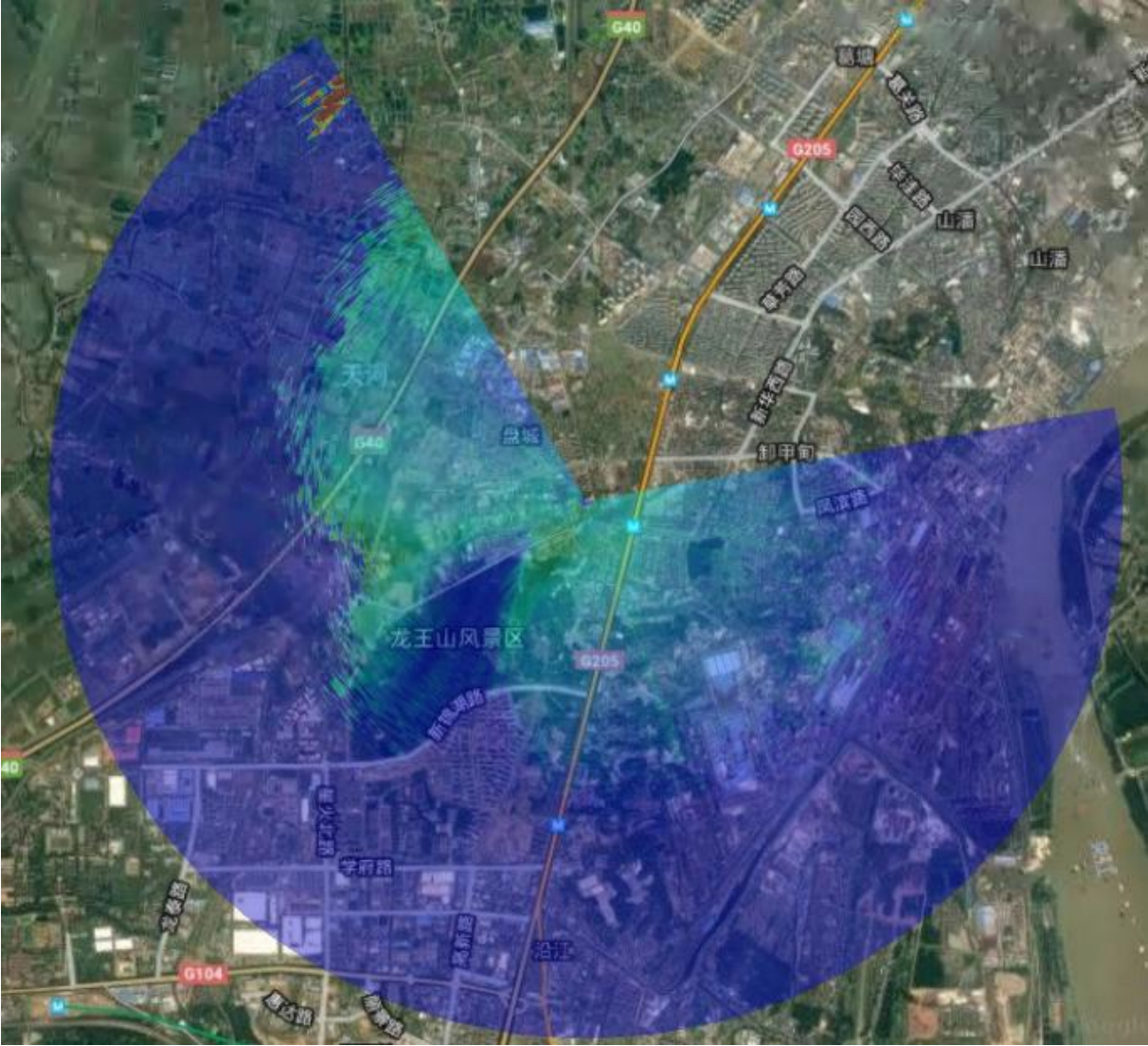
## 7. 3D 雷达

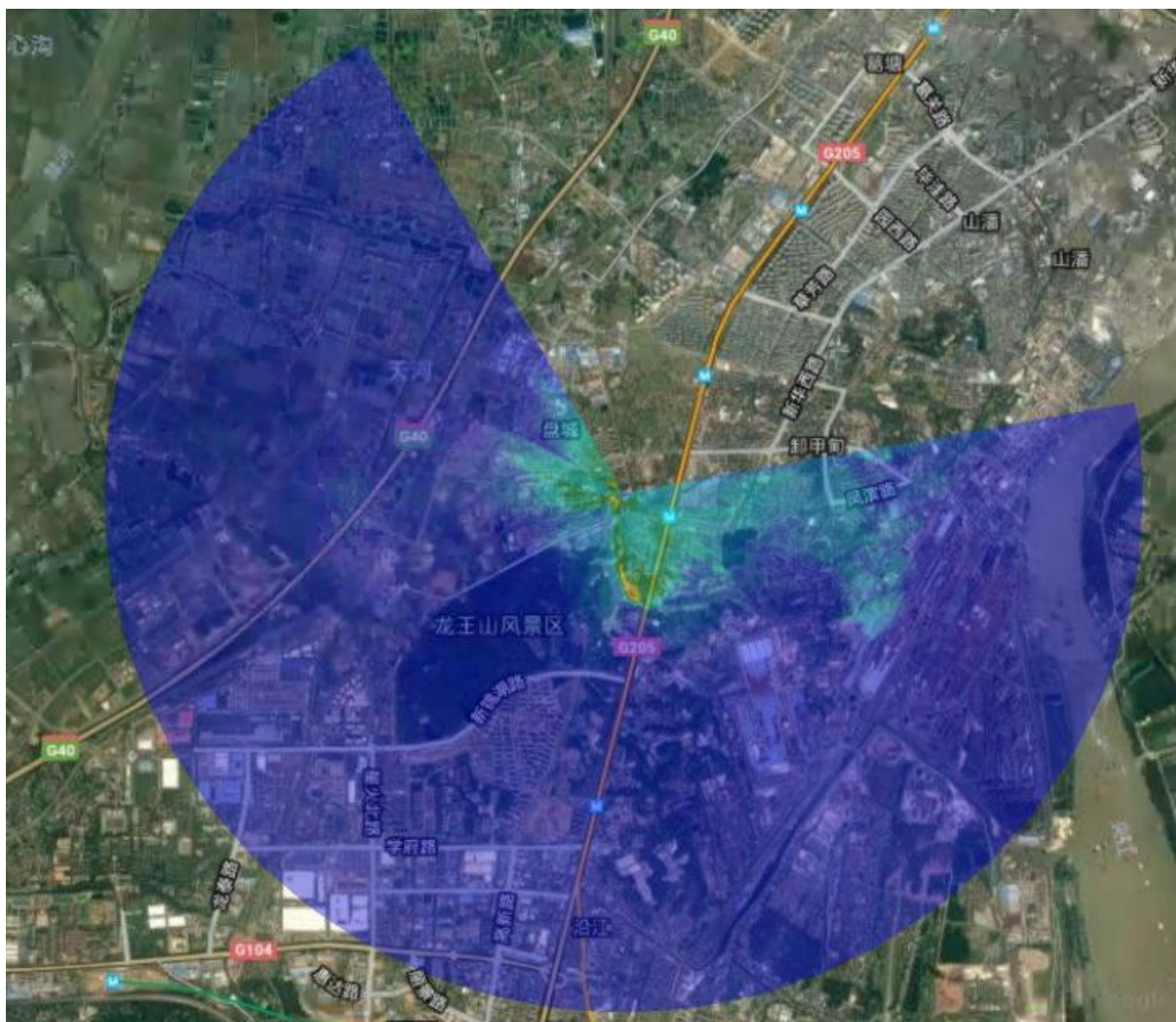


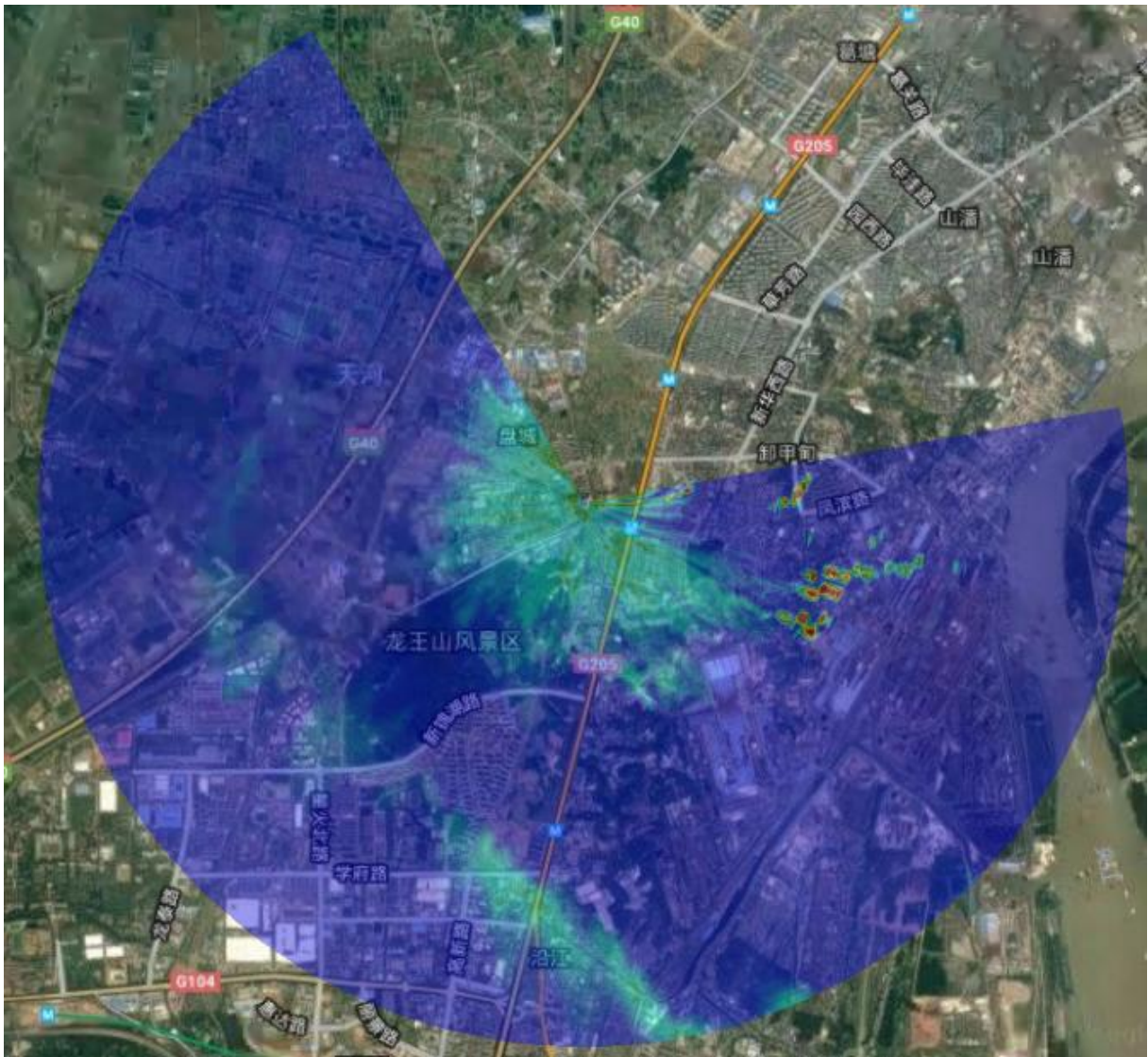








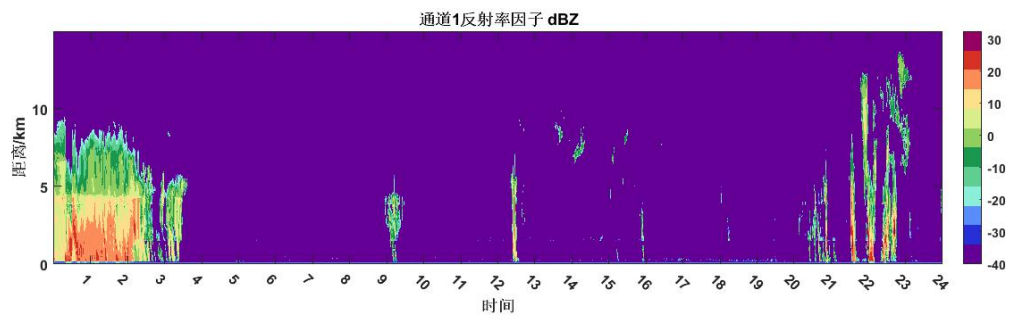




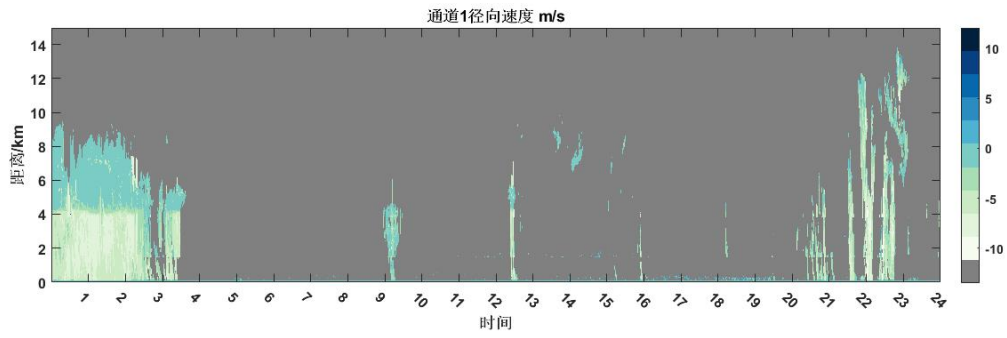
作图：张寒

## 8. 云雷达：

### (1) 反射率因子



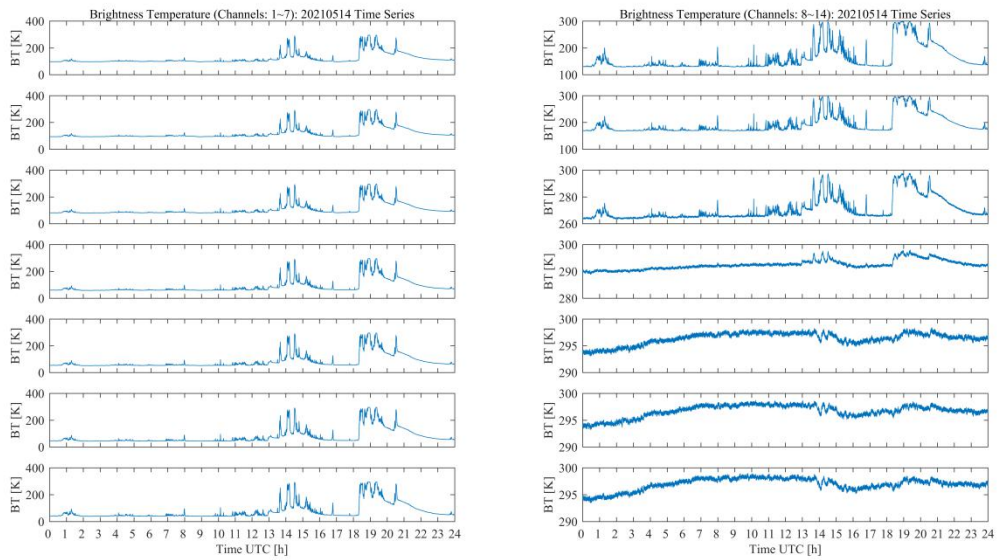
## (2) 径向速度



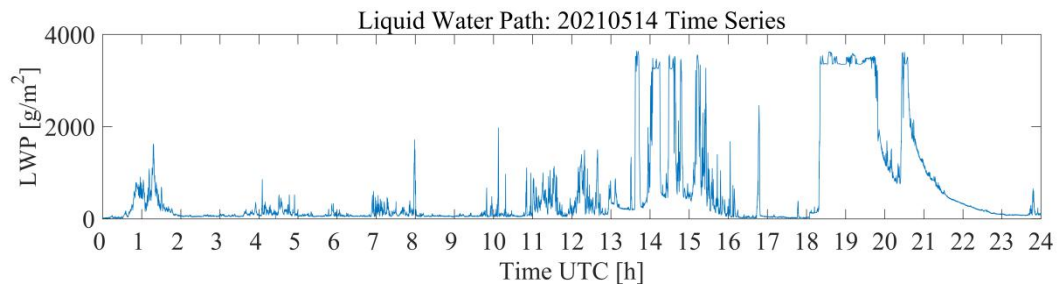
作图：吴懿璇

## 9. 微波辐射计

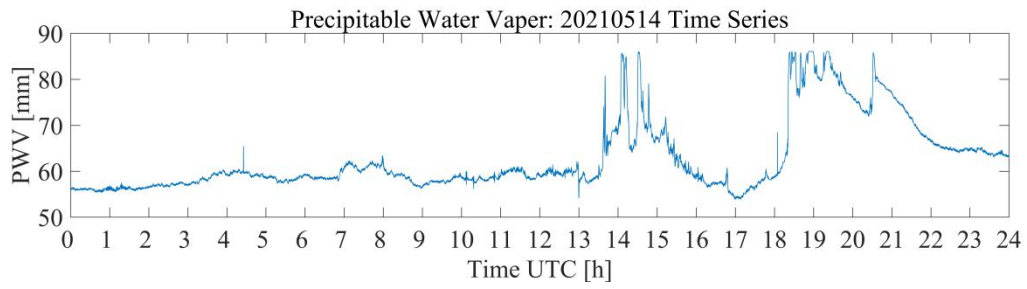
### (1) 亮温 (14 通道) 时序:



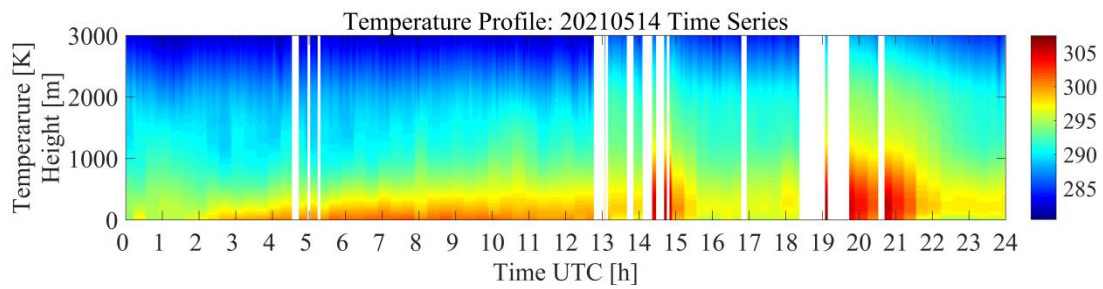
### (2) 液水路径时序:



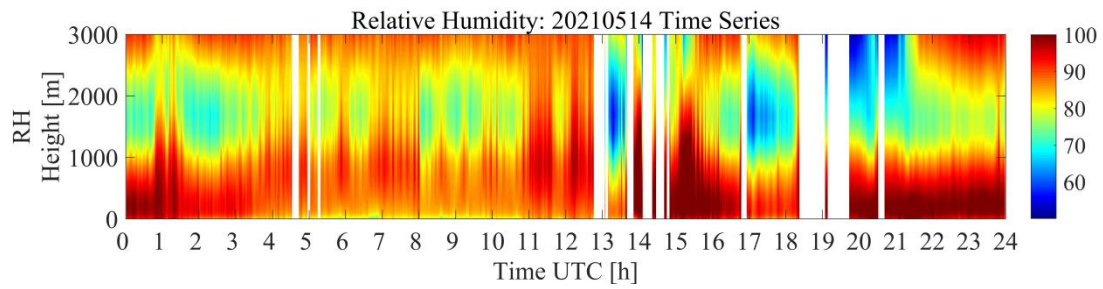
### (3) 可降水量时序:



### (4) 边界层温度廓线时序:



### (5) 边界层相对湿度廓线时序:



作图: 赏益